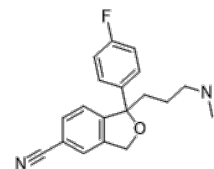


**Product Name** : Citalopram  
**Cat. No.** : PC-23147  
**CAS No.** : 59729-33-8  
**Molecular Formula** : C<sub>20</sub>H<sub>21</sub>FN<sub>2</sub>O  
**Molecular Weight** : 324.40  
**Target** : Monoamine Transporter  
**Solubility** : 10 mM in DMSO



## Biological Activity

Citalopram is an orally active selective serotonin reuptake inhibitor (SSRI), shows antidepressant and enhances serotonergic neurotransmission.

## References

Milne RJ, et al. *Drugs*. 1991;41(3):450-477.

Zeng-Liang Jin, et al. *Sci Rep*. 2017 Aug 17;7(1):8631.

**Caution: Product has not been fully validated for medical applications. Lab Use Only!**

E-mail: tech@probechem.com